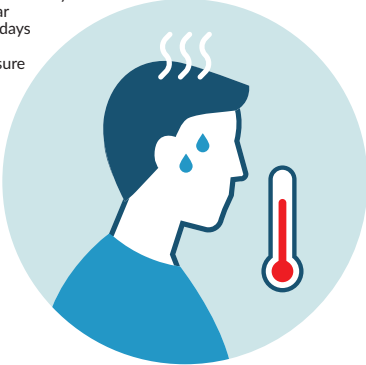


COVID-19 ADVICE FOR KIDNEY PATIENTS



SYMPTOMS* COVID-19 is a new virus that can affect your lungs and airways

Symptoms may appear 2-14 days after exposure



FEVER



COUGH

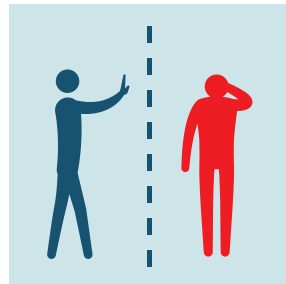


SHORTNESS OF BREATH

PREVENTION



WASH HANDS WITH WATER AND SOAP/SANITISER FOR AT LEAST 20 SECONDS



SELF-DISTANCING OF 1-2M AVOID ANY UNNECESSARY CONTACT WITH PEOPLE



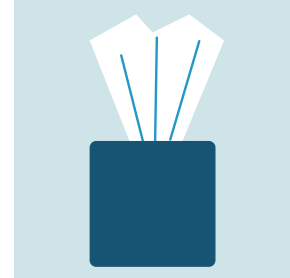
DON'T TOUCH EYES, NOSE OR MOUTH WITH UNWASHED HANDS



COVER YOUR COUGH WITH YOUR ELBOW

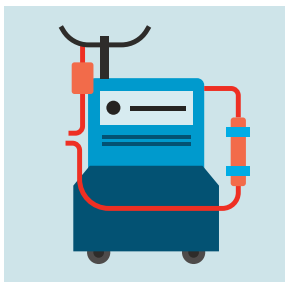


DON'T SHAKE HANDS WITH PEOPLE

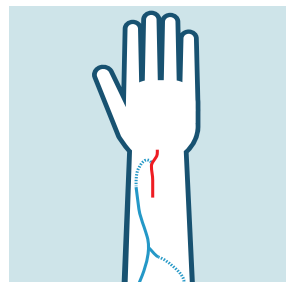


IF YOU USE A TISSUE DISCARD IT IMMEDIATELY

DIALYSIS



COVID-19 CANNOT PASS THROUGH A DIALYSIS MACHINE



COVID-19 IS NOT ABLE TO ENTER THE BODY FROM YOUR DIALYSIS ACCESS SITE



TAKE YOUR MEDICATION AS PRESCRIBED

Transplant and dialysis patients could take their temperature and keep a daily record because a significant spike in your temperature would be easier to notice. If you feel unwell do **NOT** enter a Dialysis Unit, Hospital or GP surgery – ring them instead.